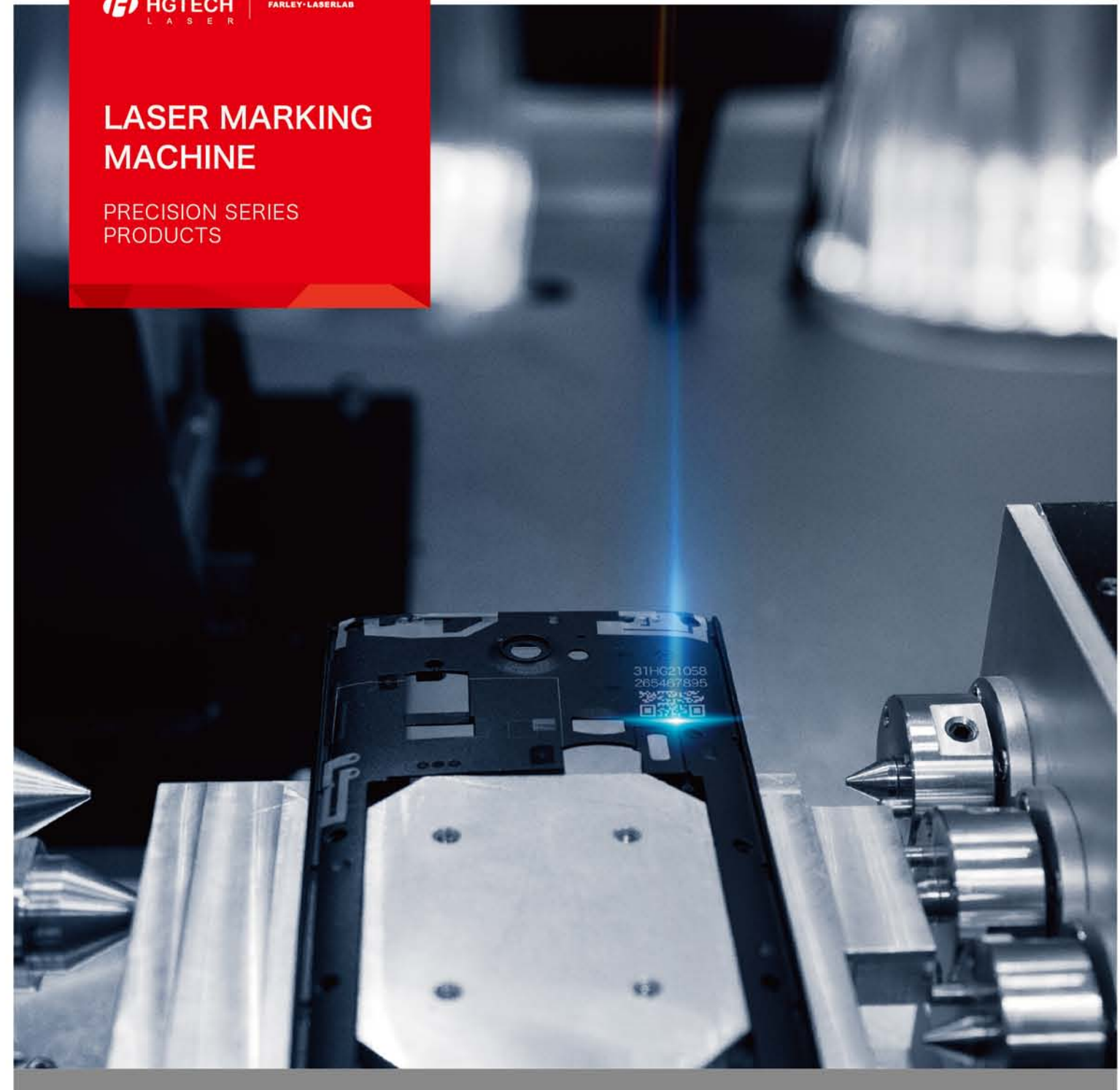


LASER MARKING MACHINE

PRECISION SERIES
PRODUCTS



Wuhan HGLaser Engineering Co.,Ltd.

ADD: HUST Industry District East Lake Hi-tech Development Zone, Wuhan, Hubei, P.R. China
PC: 430223

TEL: 0086 27 87180225 After-sales service: 0086 27 87180263 EMAIL: info@hglaser.com WEB: en.hglaser.com



Wechat



Website for mobile

If you want to know more details about us, welcome to visit our company in Wuhan! We will wholeheartedly to serve you with a company tour, inspection of samples and machine, printing samples, processing researching and other services.

The contents of this book are published through the company's research and evaluation, the content is subject to change without notice. HGLASER/ 2018-03-12



COMPANY
INTRODUCTION

HGLASER

 **HGTECH**

■ HGTECH

For Higher Glory In Manufacture

HGLASER Laser Marking Machine's Obvious Advantages

H5
PROGRAM
HGLASER
SOLUTION

H5 Program Helps You Easily Get Profit (H: High)

Market rapidly changed, Crisis struck, serious competition in Internet+ Eras. When you are confused about how to achieve transformation and upgrading of enterprises; When you are trying to rouse yourself but lack the strength to break through the bottleneck of marketing; When you are still disappointed for the quality of the product of market chaos; When you are still worried about the after sale service..... Please try to find us——HGlaser.



HGlaser official WeChat



HGlaser mobile website

En.hglaser.com

High Quality
/
High Precision
/
High Efficiency
/
High Cost-efficient
/
High Profit



For Higher Glory In Manufacture

HGLaser is a high-tech enterprise, the main business in the field of industrial manufacturing and laser processing. Over the years we have been a leader and technology pioneer in industrial manufacturing and laser processing industry. Our products set the standard for the industry. The strict quality requirements and reliable customer service is our fundamental competitiveness.

Convincing Diversified Products

HGLaser's laser product line is very rich, covering laser welding, brazing, cutting, drilling, surface peeling and marking in all areas. Variety specifications of laser marking machines are equipped with variety of different power levels and the laser source of all available wavelengths. Therefore, whatever your laser marking tasks can find the suitable laser marking machine.

- 01 / Product Lines
- 02 / Markets & Applitions
- 03 / Fiber Marking Series
- 04 / DPSS Marking Series
- 05 / CO2 Marking Series
- 05 / 3D Marking Series
- 07 / Solutions For Industry
- 08 / Global Serives



01

Fiber Marking Series

HGLaser fiber laser marking machine has a general type, large marking area rotary double-station, portable and other series each series has a different power model each model can be equipped with safety shield, can also be customized dedicated models according to user's needs at the same time.

02

DPSS Marking Series

DPSS laser marking machine includes infrared, green and UV series, which is suitable for metal and various non-metallic materials marking, is the first choice for high quality laser precision micro-processing.



03

CO2 Marking Series

HGLaser launched the CO2 laser marking machine series, with its excellent quality, perfect marking effect and perfect service system to win the attention and trust of global users.



04

3D Marking Series

HGLaser launched the 3D laser marking machine, including fiber, UV and CO2 series, which is suitable for all kinds of metals and nonmetals laser marking on 3D surface, widely used in mobile manufacture, cubic circuits, medical equipments, moulds 3C electronics, auto parts, electronic communication, etc.



Laser marking is a marking method which using the high-energy density of the laser proceeds local illumination on the work piece, resulting in the surface material evaporation or chemical reaction of color variations, therefor leaving a permanent marking, with high precision marking, fast speed and clear marking characteristics etc. HGLaser has infrared, green, ultraviolet, CO2 laser light source can handle different materials and processing requirements.

1. Stainless Steel, Aluminum, Cast Iron Marking



 Metal



Recommended models

HGLASER Fiber Marking Series

HGLASER

PRODUCT
SOLUTION

2. Auto, Mobile Phone Components Marking



Recommended models

HGLASER Fiber Marking Series
HGLASER DPSS Marking Series

3. 3C Parts Marking



• Lenovo laptop marking • Phone button laser marking

• Charger panel laser marking

• Sony parts marking

• Laptop keyboard laser marking

Recommended models

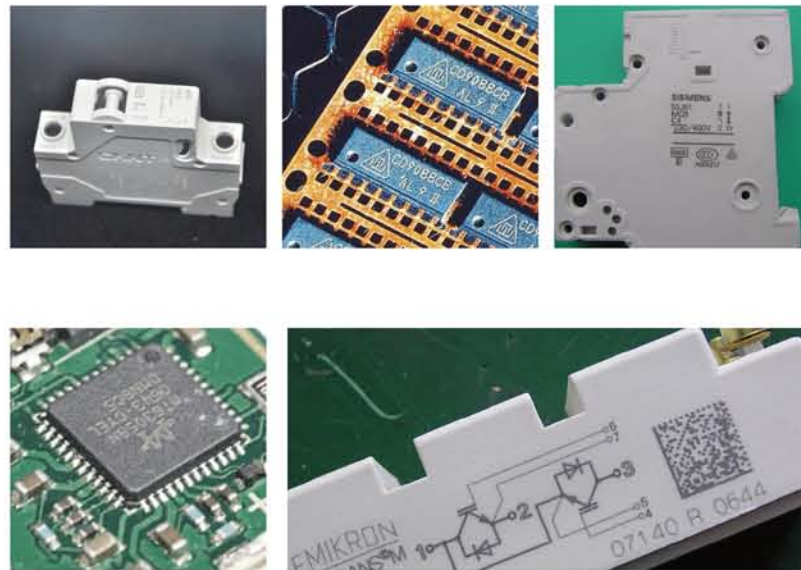
HGLASER Fiber Marking Series HGLASER DPSS Marking Series

10. Electronic Components Marking



Recommended models

Recommended Models
HGLASER Fiber Marking Series
HGLASER DPSS UV Marking Series



11. Personal Care Products Tobacco Marking

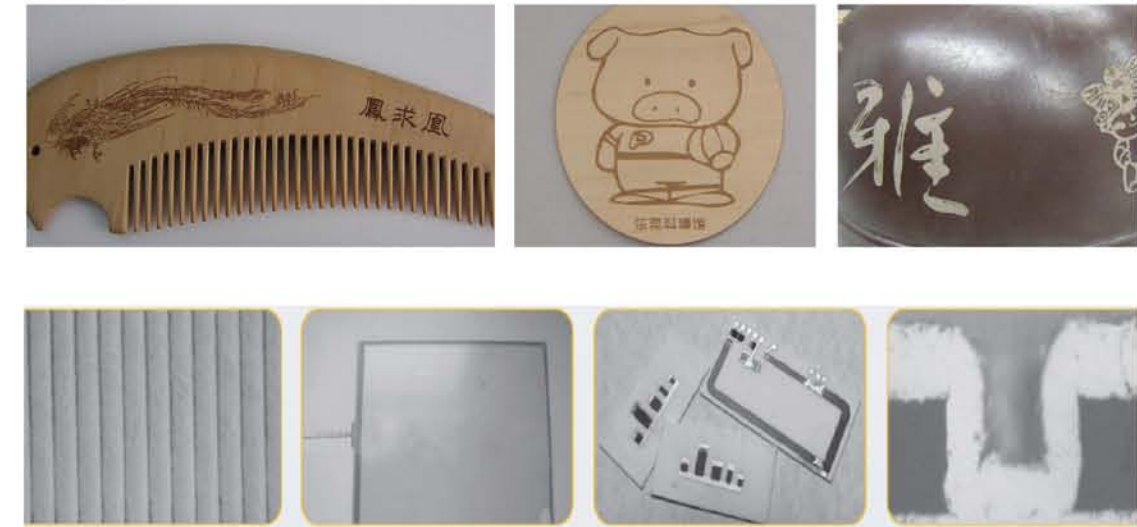


Recommended models

Recommended Models
HGLASER Co2 Marking Series
HGLASER Fiber Marking Series

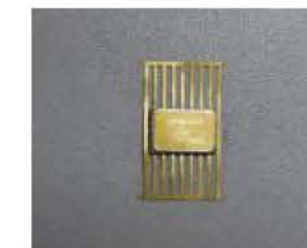


12. Special Material Marking



• Aviation gold plating pieces

• Special-shaped card



• Pe pipe



• Wafer



• Crystal



• Ceramics

Recommended models

HGLASER CO2 Marking Series HGLASER DPSS Marking Series



HGLASER FIBER MARKING SERIES

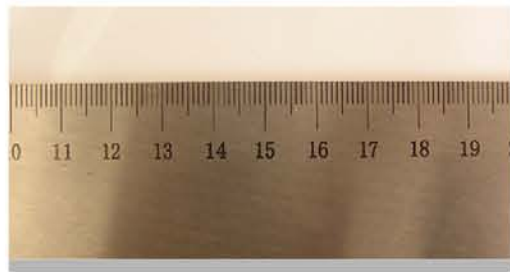
HGLASER

PRODUCT
ADVANTAGE

Laser marking is one of the most popular laser processing technologies. Laser marking is local irradiation in substances with high energy laser beam to make it evaporate rapidly and color change by physical or chemical reaction. These markers are permanent and hard to remove. Perfect marking effect, High marking speed and marking more clearly.

1. Perfect marking effect

Can mark various fine effects which are the users' requirement in an extremely tiny surface, has been known as "the king of marking" by client



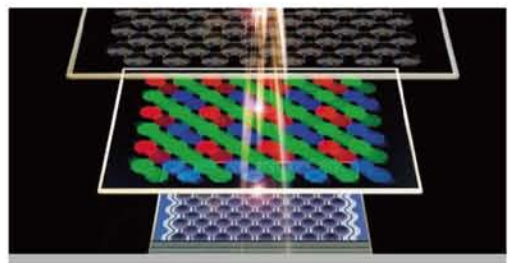
3. High marking speed, high efficiency

In the same time, the processing capacity significantly increased, Speed up the pay back on user investment



2. Rich laser automation unit technology

Optional visual recognition, measurement technology, motion modules, fixture and other rich automation unit technology and modules



4. Overall structure integration

Compact, small footprint, easy to transport



All models of the series:

LSFD series



Equipment model	LSF20D	LSF30D	LSF50D	LSF100D
Nominal average output power	20W	30W	50W	100W
Laser Wavelength	1064nm			
Pulse repetition frequency	30~60 kHz	30~60 kHz	50~100 kHz	20~100 kHz
Average power stability	<3%rms			
Marking range (Optional)	F160/110×110 (Standard), F100/70×70, F210/145×145, F254/175×175			
Minimum mark line width	0.06mm (Depends on the material)			
Minimum character height	0.2mm			
Scan speed	F=160mm, 7000mm/s			
Cooling method	Air cooling			
System power supply	1KW/AC220V/50Hz			
Total Weight	≈145kg (Net weight), 190kg(With packaging)			
Operating environment requirements	0~40° C, 30%≤RH≤85%			
Complete sets of equipment dimensions	820mm×640mm×1500mm (Length × Width × Height)			

LSF series



Equipment model	LSF20	LSF30	LSF50	LSF100
Nominal average output power	20W	30W	50W	100W
Laser Wavelength	1064nm			
Pulse repetition frequency	20~200 kHz	30~200 kHz	50~200 kHz	50~200 kHz
Average power stability	<3%rms			
Marking range (Optional)	F160/110×110 (Standard), F100/70×70, F210/145×145, F254/175×175			
Minimum mark line width	0.06mm (Depends on the material)			
Minimum character height	0.2mm			
Scan speed	< 24urad (F=160, 4.3um)			
Cooling method	Air cooling			
System power supply	1KW/AC220V/50Hz			
Total Weight	≈145kg (Net weight), 190kg(With packaging)			
Operating environment requirements	0~40° C, 30%≤RH≤85%			
Complete sets of equipment dimensions	820mm×640mm×1500mm (Length × Width × Height)			



HGLASER FIBER MARKING SERIES

HGLASER

PRODUCT PARAMETER



➤ Desktop Fiber Laser Marking Machine LSF - M



Equipment model	LSF - M		
Laser wavelength (nm)	1064nm		
Laser brand	Raycus		
Output power (W)	20	30	50
Galvo head marking speed	≤7000m/s		
Marking area	110mm×110mm (70mm×70mm 、 145mm×145mm 、 175mm×175mm, Optional)		
Pulse repetition frequency	30-60kHz		
Marking standard line height	0.06mm(Depends on the material)		
Minimum character height	0.2mm		
Marking software	Customized by HGLASER, can be directly imported .ai, .plt, .dxf etc		
Communication interface	USB, RS232		
Power supply	AV220V/50HZ, Voltage fluctuation range ±5%, if out of the range, voltage stabilizer would be needed		
Machine power consumption	0.6KW		
Net weight	65KG		

➤ Suitcase Fiber Laser Marking Machine LSF - B



Equipment model	LSF - B		
Laser wavelength (nm)	1064nm		
Laser brand	Raycus		
Output power (W)	20	30	50
Galvo head marking speed	≤7000m/s		
Marking area	110mm×110mm (70mm×70mm 、 145mm×145mm 、 175mm×175mm, Optional)		
Pulse repetition frequency	30-60kHz		
Marking standard line height	0.06mm(Depends on the material)		
Minimum character height	0.2mm		
Marking software	Customized by HGLASER, can be directly imported .ai, .plt, .dxf etc		
Communication interface	USB, RS232		
Power supply	AV220V/50HZ, Voltage fluctuation range ±5%, if out of the range, voltage stabilizer would be needed		
Machine power consumption	0.6KW		
Net weight	75KG		

➤ Portable Fiber Laser Marking Machine LSF - H



Equipment model	LSF - H		
Laser wavelength (nm)	1064nm		
Laser brand	Raycus		
Output power (W)	20	30	50
Galvo head marking speed	≤7000m/s		
Marking area	110mm×110mm (70mm×70mm 、 145mm×145mm 、 175mm×175mm, Optional)		
Pulse repetition frequency	30-60kHz		
Marking standard line height	0.06mm(Depends on the material)		
Minimum character height	0.2mm		
Marking software	Customized by HGLASER, can be directly imported .ai, .plt, .dxf etc		
Communication interface	USB, RS232		
Power supply	AV220V/50HZ, Voltage fluctuation range ±5%, if out of the range, voltage stabilizer would be needed		
Machine power consumption	0.6KW		
Net weight	≈45KG		

➤ Full protection fiber laser marking machine



Equipment model	LSF - H		
Laser wavelength (nm)	1064nm		
Laser brand	Raycus		
Output power (W)	20	30	50
Galvo head marking speed	≤7000m/s		
Marking area	110mm×110mm (70mm×70mm 、 145mm×145mm 、 175mm×175mm, Optional)		
Pulse repetition frequency	30-60kHz		
Marking standard line height	0.06mm(Depends on the material)		
Minimum character height	0.2mm		
Marking software	Customized by HGLASER, can be directly imported .ai, .plt, .dxf etc		
Communication interface	USB, RS232		
Power supply	AV220V/50HZ, Voltage fluctuation range ±5%, if out of the range, voltage stabilizer would be needed		
Machine power consumption	1KW		
Net weight	85KG		



HGLASER FIBER MARKING SERIES

HGLASER

PRODUCT PARAMETER



➤ HG-V series



Equipment model	HG-V20
Nominal average outputpower	20W
Laser Wavelength	1064nm
Pulse repetition frequency	20~80kHz
Average power stability	<3%rms
Marking range (Optional)	F160/110×110 (Standard), F100/70×70, F210/145×145, F254/175×175
Minimum mark line width	0.06mm(Depends on the material)
Minimum character height	0.2mm
Scan speed	F=160mm, 7000mm/s
Cooling method	Air cooling
System power supply	1KW/AC220V/50Hz
Total Weight	≈145kg(Net weight), 190kg(With packaging)
Operating environment requirements	0 ~ 40 °C, 30%≤RH≤85%
Complete sets of equipment dimensions	820mm×560(780)mm×1495mm (Length × Width × Height)

➤ LSFN series



Equipment model	LSF20N
Nominal average outputpower	20W
Laser Wavelength	1064nm
Pulse repetition frequency	1.6~1000kHz
Average power stability	<3%rms
Marking range (Optional)	F160/110×110(Standard), F100/70×70, F210/145×145, F254/175×175
Minimum mark line width	0.06mm (Depends on the material)
Minimum character height	0.2mm
Scan speed	F=160mm, 7000mm/s
Cooling method	Air cooling
System power supply	1KW/AC220V/50Hz
Total Weight	≈180kg (Net weight), 220kg(With packaging)
Operating environment requirements	0 ~ 40 °C, 30%≤RH≤85%
Complete sets of equipment dimensions	820mm×640mm×1450mm (Length × Width × Height)

➤ LSFH series



Equipment model	LSF20H
Nominal average outputpower	20W
Laser Wavelength	1064nm
Pulse repetition frequency	50~1000 kHz
Average power stability	<3%rms
Marking range (Optional)	F160/110×110 (Standard), F100/70×70, F210/145×145, F254/175×175
Minimum mark line width	0.06mm(Depends on the material)
Minimum character height	0.2mm
Scan speed	F=160mm, 7000mm/s
Cooling method	Air cooling
System power supply	1KW/AC220V/50Hz
Total Weight	≈180kg (Net weight), 220kg(With packaging)
Operating environment requirements	0 ~ 40 °C, 30%≤RH≤85%
Complete sets of equipment dimensions	820mm×560(780)mm×1495mm (Length × Width × Height)

➤ LSF Flexible car label marking machine series



Equipment model	LSF20LI
Nominal average outputpower	20W
Laser Wavelength	1064nm
Pulse repetition frequency	1.6~1000kHz
Average power stability	<3%rms
Marking range (Optional)	F254/175×175(Standard)
Minimum mark line width	0.06mm(Depends on the material)
Minimum character height	0.2mm
Scan speed	≤7000mm/s
Cooling method	Air cooling
System power supply	2 KW/AC220V/50Hz
Total Weight	≈480kg
Operating environment requirements	10 ~ 35 °C, humidity≤90%
Complete sets of equipment dimensions	1100mm×800mm×1670mm (Length × Width × Height)

All models of the series:

➤ LSG Green laser series



Equipment model	LSG10EA	LSG20EA	LSG40EA
Nominal average output power	20W	30W	50W
Laser Wavelength	532nm		
Pulse repetition frequency	20-200kHz		
Average power stability	<3%rms		
Marking range (Optional)	F160/110×110(Standard), F100/60×60, F254/165×165		
Minimum mark line width	0.03mm(Depends on the material)		
Minimum character height	0.06mm		
Scan speed	F=160mm, 7000mm/s		
Cooling method	Water cooling		
System power supply	1.5KW/AC220V/50Hz		
Total Weight	≈255Kg		
Operating environment requirements	10 ~ 35 °C, humidity ≤90%		
Complete sets of equipment dimensions	1212mm×640mm×1715mm (Length × Width × Height)		

1. Have independent intellectual property rights and patented technology

Stable equipment performance, high reliability, to satisfy the requirement of continuous 24 hours of full load operation, suitable for large quantities needs of factory processing



2. Fine marking, good light mode

Exquisite marking lines, favorable rate of customer is reaching 100%



3. Long service life, easy maintenance

The average working life is 20 times as longer as that of the traditional machine, greatly reducing the equipment maintenance amount



4. Low using cost

High electro-optical conversion efficiency, reducing the 75% energy consumption which compared with the traditional YAG marking machine



HGLASER

PRODUCT
PARAMETER

➤ LSUE UV series



Equipment model	LSU3EA	LSU5EA
Nominal average output power	3W	5W
Laser Wavelength	355nm	
Pulse repetition frequency	20~200kHz	
Average power stability	<3%rms	
Marking range (Optional)	F170/105×105 (Standard), F120/140×140, F255/170×170	
Minimum mark line width	0.01mm(Depends on the material)	
Minimum character height	0.03mm	
Repeat positioning accuracy	<24 μrad(F170, 4.1 μm)	
Long time drift	<0.6 mrad, Constant ambient temperature +15 °C~+35 °C, 8 hours of continuous work)	
Scan speed	F=170mm, 7000mm/s	
Cooling method	Water cooling	
System power supply	1.5KW/AC220V/50Hz	
Total Weight	≈255Kg	
Operating environment requirements	10 ~ 35 °C, humidity ≤90%	
Complete sets of equipment dimensions	1052mm×640mm×1715mm (Length × Width × Height)	

➤ LSUD UV double station



Equipment model	LSU3D	LSU5D
Nominal average output power	3W	5W
Laser Wavelength	355nm	
Pulse repetition frequency	20~200kHz	
Average power stability	<3%rms	
Marking range (Optional)	F170/105×105(Standard), F120/140×140, F255/170×170	
Minimum mark line width	0.01mm(Depends on the material)	
Minimum character height	0.03mm	
Scan speed	F=170mm, 7000mm/s	
Cooling method	Water cooling	
System power supply	1.5KW/AC220V/50Hz	
Total Weight	≈400Kg	
Operating environment requirements	10 ~ 35 °C, humidity ≤90%	
Complete sets of equipment dimensions	1550mm×900mm×1825mm (Length × Width × Height)	

➤ LSUE UV series



Equipment model	LSU5EA	LSU12EA
Nominal average output power	5W	12W
Laser Wavelength	355nm	
Pulse repetition frequency	20~200kHz	1~200kHz
Average power stability	<3%rms	
Marking range (Optional)	F170/105×105(Standard), F210/140×140, F255/170×170	
Minimum mark line width	0.01mm(Depends on the material)	
Minimum character height	0.03mm	
Repeat positioning accuracy	<24 μrad(F170, 4.1 μm)	
Long time drift	<0.6 mrad, Constant ambient temperature +15 °C~+35 °C, 8 hours of continuous work)	
Scan speed	F=170mm, 7000mm/s	
Cooling method	Water cooling	
System power supply	1.5KW/AC220V/50Hz	
Total Weight	≈350Kg	
Operating environment requirements	10 ~ 35 °C, humidity ≤ 90%	
Complete sets of equipment dimensions	1240mm×700mm×1700mm (Length × Width × Height)	

HGLASER

PRODUCT
PARAMETER



DPSS MARKING
SERIES

All models of the series:

➤ LSC10/30/55 CO₂ Laser marking machine

Equipment model	LSC10	LSC30	LSC60
Nominal average output power	10W	30W	60W
Laser Wavelength	CO ₂ /10.6μm	CO ₂ /10.6μm	CO ₂ /10.6μm
Pulse repetition frequency	≤20kHz	0~25kHz	0~25kHz
Average power stability	±5%		
Marking range (Optional)	F150/107×107(Standard), F200/140×140, F250/175×175		
Minimum mark line width	0.1mm(Depends on the material)		
Minimum character height	0.4mm		
Scan speed	F=150mm, 7000mm/s		
Cooling method	Air cooling		
System power supply	1.5KW/AC220V/50Hz		
Total Weight	≈170Kg		
Operating environment requirements	Synrad 10W CO ₂ laser: 15 ~ 40 °C; Coherent 30W CO ₂ laser: 5 ~ 40 °C humidity≤90%		
Complete sets of equipment dimensions	640mm×930mm×1435mm (Length × Width × Height)		

➤ LSC100/150 CO₂ marking machine

Equipment model	LSC100	LSC150
Nominal average output power	100W	150W
Laser Wavelength	CO ₂ /10.2~10.7μm	CO ₂ /10.2~10.8μm
Pulse repetition frequency	0~100kHz	0~100kHz
Average power stability	±10%	≤±7%
Marking range (Optional)	F150/107×107(Standard), F100/70×70, F200/140×140, F250/175×175	
Minimum mark line width	0.1mm(Depends on the material)	
Minimum character height	0.4mm	
Repeat positioning accuracy	<24μrad(F150, 3.7μm)	
Long time drift	<0.6 mrad, Constant ambient temperature +15 °C~+35 °C, 8 hours of continuous work	
Scan speed	F=150mm, 7000mm/s	
Cooling method	Water cooling	
System power supply	4.5KW/AC220V/50Hz	
Total Weight	≈350Kg	
Operating environment requirements	5 ~ 40 °C, humidity≤90%	
Complete sets of equipment dimensions	Control cabinet, laser profile frame, the working table was presented distributed arrangement (Length × Width × Height)	

1.Exquisite marking lines

Using imported metal sealed RF excitation CO₂ laser, stable and reliable performance, high repeatability accuracy and positioning accuracy, favorable rate of customer is reaching 100%



2.Long service life

Many manufacturers used CO₂ laser which service life is only 5000 hours, and HGLaser used laser which service life up to 40,000 hours or more, 24 hours full load operation, can well meet the requirements of mass production and processing of enterprise



3.Environmentally friendly

Does not produce any harmful chemical substances to the environment and the human body, which is an environmentally friendly marking method



4.Simple operation

Powerful dedicated marking software, friendly man-machine dialogue interface, generally skillful workers can quickly independent operation



All models of the series:

➤ Fiber 3D Laser Marking Machine

No.	LSF20DS、LSF30DS、LSF50DS、LSF100DS	Remarks
Laser	20W、30W、50W、100W	Raycus/IPG Laser Source
Scanner	3D Scanner	Fine, accurate, fast and stable performance with range 400×400mm、600×600mm、800×800mm
IPC	HGLaser	High stability of continuous work, and strong anti-interference ability, smoothly software editing and running.
Control Card	HGLaser	Stable performance.
Marking Software	HGLaser	Software is easy to operate and edit, also compatible with other software formats.
Lifting Mechanism	Strike 540mm	Stable and reliable performance by four guide rod lifting mechanism.
Cabinet	Standard small cabinet, chiller size 1240mmX800mmX1850mm	High strength cabinet and load capacity, internal device with good grounding, and strong anti-interference ability.
Protecting Cover	HGLaser	For laser protection use.
Chiller	HGLaser	Air cooling.
Power Supply	1KW/AC220V/50Hz	

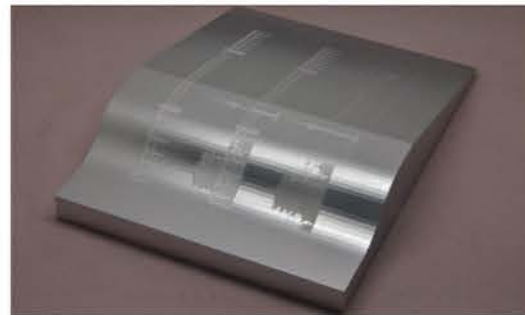
1、First Class 3D Marking Technology

The laser marking can be achieved more accurately on the surface of workpiece, and there is no defocus in processing. Even complex surface can be handled freely. 3D dynamic laser marking process are controlled by self developed hardware and software, and a special three dimensional galvanometer is configured to control the laser beam mark on any 3D surface perfectly.



2、High Precision 3D Positioning Technology

High speed focusing and scanning system, laser beam base mode, short pulse, high peak power, high repetition rate, bring the perfect marking result for customer.



3、Leading 3D Graphics Processing Technology

The operation interface is friendly and suitable for various formats such as DXF, PLT, CNC, STEP, IGES and so on.



4、Great Performance

High photoelectric conversion, long service life, simple maintenance, fast marking speed and high efficiency, independent light source, guaranteed performance and service, flexible extensible configuration, optional automatic lifting, automatic focusing and rotation functions.



➤ 3D Marking Series





3D MARKING SERIES

HGLASER

PRODUCT
PARAMETER



HGLASER

PRODUCT
PARAMETER

➤ 3D UV Laser Marking Machine

No.	LSU3DS、LSU5DS	Remarks
Laser	20W、30W、50W、100W	UV integrated laser source
Scanner	3D Scanner	Fine, accurate, fast and stable performance with range 100×100mm, 200×200mm, 300×300mm, 400×400mm
IPC	HGLaser	High stability of continuous work, and strong anti-interference ability, smoothly software editing and running.
Control Card	HGLaser	Stable performance.
Marking Software	HGLaser	Software is easy to operate and edit, also compatible with other software formats.
Lifting Mechanism	Strike 540mm	Stable and reliable performance by double 170 profile lifting mechanism.
Cabinet	Standard small cabinet, chiller size 1240*700*1698mm	High strength cabinet and load capacity, internal device with good grounding, and strong anti-interference ability.
Protecting Cover	HGLaser	For laser protection use.
Chiller	HGLaser	Integrated circulating water cooling.
Power Supply	1.5KW/AC220V/50Hz	

➤ LSC30DS Laser Marking Machine

No.	LSC10DS, LSC30DS, LSC100DS, LSC150DS	Remarks
Laser	10W、30W、100W、150W	CO2 Laser Source
Scanner	3D Scanner	Fine, accurate, fast and stable performance with range 400×400mm, 600×600mm, 800×800mm
IPC	HGLaser	High stability of continuous work, and strong anti-interference ability, smoothly software editing and running.
Control Card	HGLaser	Stable performance.
Marking Software	HGLaser	Software is easy to operate and edit, also compatible with other software formats.
Lifting Mechanism	Strike 285mm	Stable and reliable performance by double 170 profile lifting mechanism.
Cabinet	Standard cabinet size 1200*1100*1712mm	High strength cabinet and load capacity, internal device with good grounding, and strong anti-interference ability.
Protecting Cover	HGLaser	For laser protection use.
Chiller	HGLaser	Air cooling.
Power Supply	1.5KW/AC220V/50Hz (10W、20W) 4.5KW/AC220V/50Hz (100W、150W)	

➤ 3D Marking Series



➤ 3D Marking Series



CONVINCING
MARKING
EFFECTQUALITY &
EFFICIENT
AFTER-SALES
SERVICE

HGLASER

GLOBAL
MARKETING
CONNECTIONS

3C Industry



White home appliances



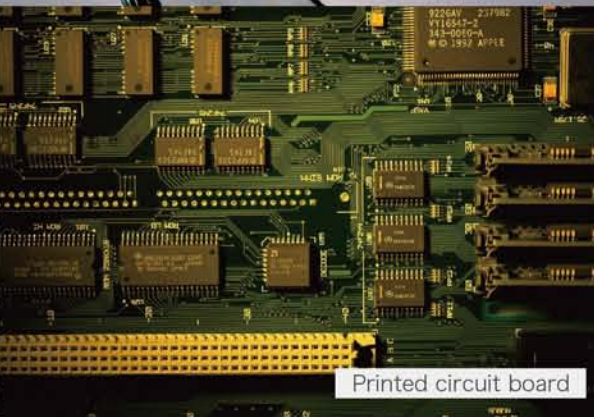
Semiconductor



Brittle material



Automobile Industry

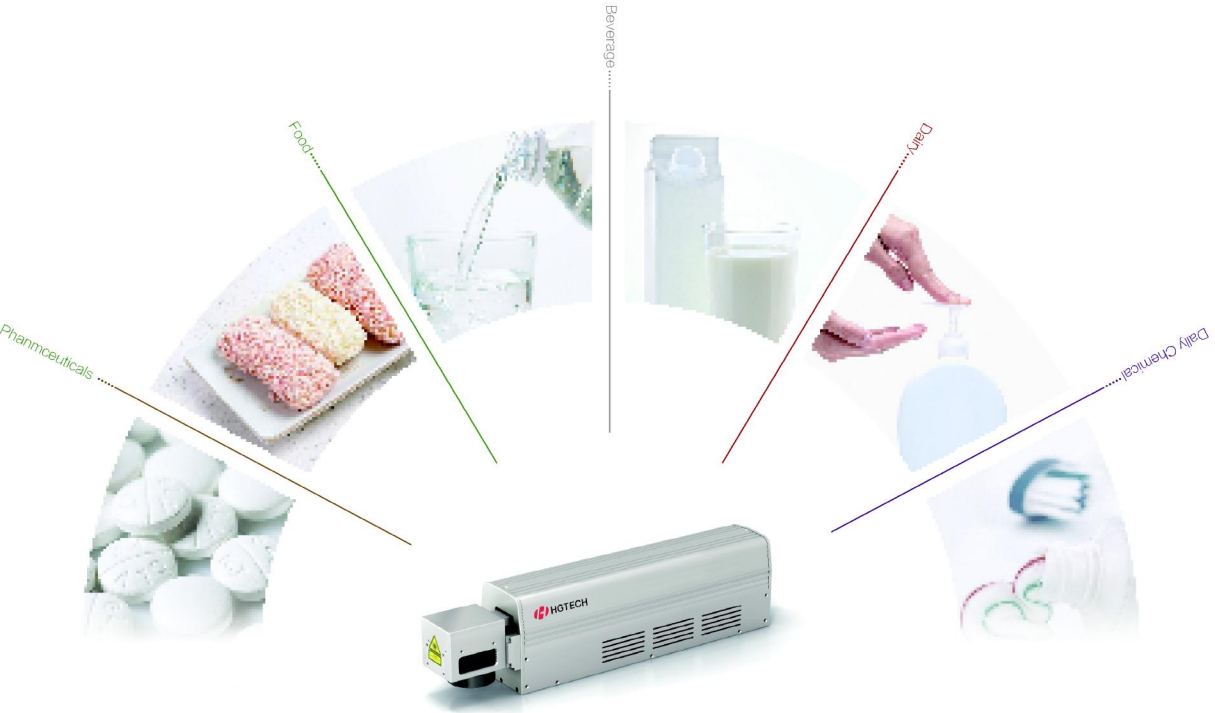


Printed circuit board



Continuously persist "Client as God and Market Orientation", HGLASER has established perfect market service system. More than 40% of employees are market sales and service staffs. We have set up more than 40 offices in domestic, distributed in major central cities, so as to implement "Closer to the user, extending the service". The nationwide sales network ensures timely and quick response to customers.

For more examples please see: <http://en.hglaser.com/>



Wuhan HGLaser Engineering Co.,Ltd
Address:Huagong Tech Building Science And Technology Region Of Hust, Donghu High-tech Zone, Wuhan, Hubei, Province, P.R China
PC:430223
Tel:+86 (0)27 87180263/0225 After-sales service:+86 (0)27 87180263
FAX: 027-87180210 Email:info@hglaser.com / farleyinfo@hglaser.com Web:en.hglaser.com
SERICE CENTRE
Korea / Thailand / Malaysia / Mexico / USA / Argentina / Brazil / Iran / Russia / Taiwan / India / Indonesia / Poland / Vietnam
If you want to know more details about us, welcome to visit our company in Wuhan! We will wholeheartedly to serve you with a company tour
inspection of samples and machine, printing samples, processing researching and other services.
The contents of this book are published through the company's research and evaluation, the content is subject to change without notice.

High Efficiency and Precision
HGLASER
Inline Marking Application Solution

FlyingU UV Laser Marking Series
FlyingF Fiber Laser Marking Series
FlyingC CO2 Laser Marking Series

There are two ways for anti-counterfeit, that is laser mark and jet ink Coding has been used in commodity business, food and pharmaceuticals industry.

Laser Wave Length :355 nm
UV Laser Source
Limit Thermal Region
Small Focusing Spot Size
Especially for Special Material Marking

FlyingU
UV Laser
Marking Series



FlyingF
Fiber Laser
Marking Series








Good Beam Mode
Reliable and Stable System
Laser Source Life Over 100,000 Hours
Especially for Long-distance Transmission
in Complex Production Line



Imported MRF CO2 Laser Source
Good Beam Mode
Maintenance-free and Installation-flexible
Especially for Working in Various Conditions

FlyingC
CO2 Laser
Marking Series

Laser Marking VS Ink Jet

		 Laser Marker	 Ink Jet
 Performance	Anti-counterfeit	Character can be dot matrices or line Marking on product surface Non-removable and changeable	Removable and changeable
	Working Condition	High efficiency Online Non-stop laser marking Working on static state and dynamic state	Only working on dynamic state
	Flexibility	Marking serial number, lot number, bar code, QR code, logo, graphic	Marking bar code, lot number and simple graphic
	Reliability	24-hour continuous working Maintenance free and little environment affection	High failure rate Great environment affection
 Operation & Installation	Use	Windows and interface with high resolution	Low resolution
	Installation	Compact size and marking head can be installed on production line in various plant	Some machines should be connected with air compressor
 Cost	Initial Cost	High	Low
	Operating Cost	Low	High
 Data Processing	——	Strong ability of data transmission and processing	Limited ability of data transmission and processing
 Environmental Protection and Safety	——	Environmental-friendly (GB7247-87; GB10320-88)	Environmental-pollution

FlyingC CO2 Laser Marking Series



Details

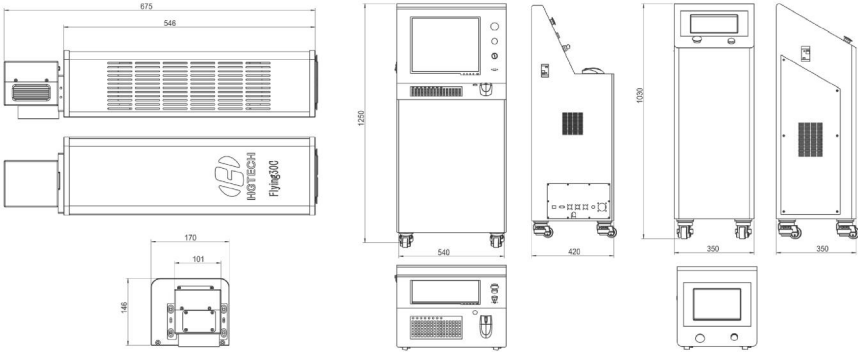
- Professional industrial laser source to ensure high speed and consistency of marking
- 24-hour' s stable working to meet the need of volume production
- Human conversation interface

Application

It' s suitable for various non-metallic material and some metallic material , such as PVC, paper, rubber, wood, glass, ceramics, PET, plastic, HDPE, leather and etc. It' s mostly applied for package box, package bag, thin film, food can, glass bottle, beverage bottle, HDPE bottle , tube, cable and electronic components.

Optical Cabinet

Operating Cabinet



Technical Parameters

Model		FlyingC 30C / 55C / 70C / 100C			
Marking Parameter	Focusing Lens	F=160	F=100 (可选)	F=210 (可选)	F=254 (可选)
	Marking Area	110×110	69×69	145×145	175×175
	Working Distance	152.7±6mm	100.9±4mm	204.3±8mm	256±10mm
	Marking Speed	400 cha/sec (350/500Optiona) , Times New Roman, 2mm(Height)			
	Repositioning Resolution	<24 μ rad (F160, 3.7 μ m)			
	Min.Marking Character	0.4mm			
	Min.Line Width	0.1mm(Depending on Material)			
Marking Laser	Wavelength	CO2/10.6 μm,CO2/10.2μm,CO2/9.3μm			
	Output Power	10/30/55/70/100			
	Power Stability	±5%rms			
Indicator Laser	Pulse Repetition Frequency	0 ≤ F ≤ 25kHz			
	Wavelength	Red Light ,650nm			
	Output Power	<5mW			
Others	Operating Environment	0-35℃, Humidity≤ 90%			
	Cooling Method	Air Cooling			

FlyingF Fiber Laser Marking Series



Details

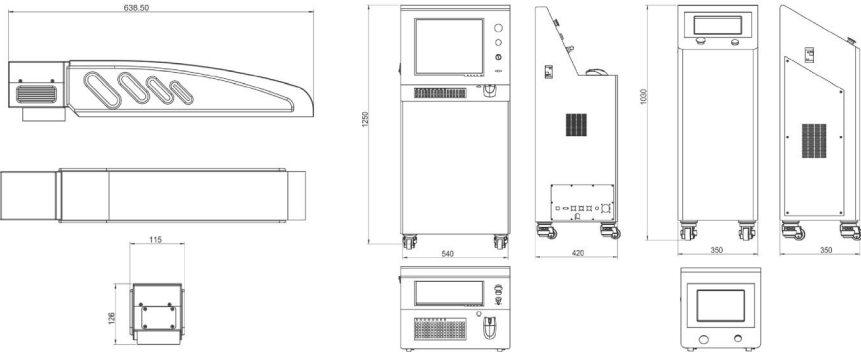
- ICompact size and easy-installed bracket to satisfy production line in complex working conditions
- Professional industrial laser source to ensure high speed and consistency of marking 24-hour' s stable working to meet the need of volume production
- High photoelectric conversion efficiency , consumable free and long life time Human conversation interface

Application

It' s suitable for various metallic material and some non-metallic material. It' s applied for metallic material after surface processing, PVC, aluminum film, rubber, plastic and HDPE.

Optical Cabinet

Operating Cabinet



Application

Model		FlyingF 10F / 20F / 30F / 50F			
Marking Parameter	Focusing Lens	F=160	F=100 (Optional)	F=210 (Optional)	F=254 (Optional)
	Marking Area	110×110	69×69	145×145	175×175
	Working Distance	180±3.6mm	107±2mm	226±4.5mm	278±5.6mm
	Marking Speed	500 cha/sec(400/640 Optional),Times New Roman, 1mm(Height)			
	Repositioning Resolution	<2μ rad(F160,0.36μm)			
	Min.Marking Character	0.2mm			
	Min.Line Width	60μm(Depending on Material)			
Marking Laser	Wavelength	Fiber / 1064nm			
	Output Power	10/20/30/50			
	Power Stability	<3%rms			
Indicator Laser	Pulse Repetition Frequency	20KHz ≤ F ≤ 80kHz			
	Wavelength	LD Red Light ,650nm			
	Output Power	<5mW			
Others	Operating Environment	0-35℃, Humidity≤ 90%			
	Cooling Method	Air Cooling			



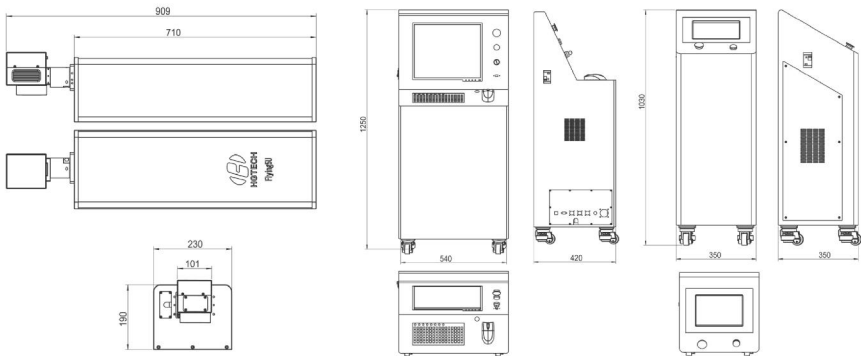
Details

- Compact size and easy-installed bracket to satisfy production line in complex working conditions
- Professional industrial laser source to ensure high speed and consistency of marking 24-hour’ s stable working to meet the need of volume production
- High photoelectric Conversion efficiency , consumable free and long life time
- Human conversation interface

Application

It’ s widely applied for eletronic components, intergrated circuit, metallic tool, auto parts, plastic products

Optical Cabinet ——— Operating Cabinet



HUARAY

Application

Model	FlyingU 3U / 5U / 12U / 20U			Remarks
Wavelength	355			
Marking Speed	≥ 7m/s			
Marking Area	110x110mm			45x145mm(Optional)
Focal Length	180mm			
Character	Dot Matrixx / Line			
Mode	Static/Dynamic			
Online Marking Speed	≤ 120m/min			Depend on Marking Content
Material	Label/Paper/PET/HDPE/PE			
Working Temperature	5-35℃			
Working Humidity	Humidity≤ 95%			
Structural Material	Aluminium Alloy/Stainless Steel			
Edit Mode	Computer Software			
Communication Interface	USB;RS232;Internet Access			
Power Supply	AV220V/50HZ			
Power Consumption	1500W	1600W	2000W	



8h Feedback inline + 24h Solution
Local Installation and Training Service

As the pioneer of Chinese laser industry, HGLASER has sold thousands of machines all around the world.
HGLASER has overseas branches and offices in Australia, USA, India, Vietnam , Malaysia and Taiwan.
With local installation and service members, HGLASER has always provided customer-oriented solutions .

Typical
Applications

Beverage Industry



Bottle Beverage

- 1) Production Date Marking
- 2) QR Code Marking
- 3) Traceability Code Marking



- FlyingC 30C Laser Marking Machine is applied for production date marking on bottle beverage made of PVC, PP, PE and PET material, is also best choice for traceability code and product information marking on corrugated box.
- FlyingU 5U Laser Marking Machine is applied for QR code marking on bottle cap made of HDPE, PE and PP material.



Canned Beverage

- 1) QR Code or Winning Number Marking InsidetheTab
- 2) QR Code Marking on Can Surface



- FlyingF 20F Fiber Laser Marking Machine is applied for QR code or production date marking on aluminum can
- FlyingC 50C CO2 Laser Marking Machine is applied for QR code or production date marking on tin plate.



Dairy Package

- 1) Production Date Marking
- 2) QR Code Marking
- 3) Traceability Code Marking



- FlyingU UV Laser Marking Machine is applied for production date or QR code marking on HDPE material.
- FlyingC CO2 Laser Marking Machine is applied for production date marking on TETRAPAK.

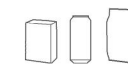


Liquor Package

- 1) Production Date Marking
- 2) QR Code Marking
- 2) Traceability Code Marking



- FlyingC CO2 Laser Marking Series are applied for production date marking on glass and ceramics bottle, and is also the best choice for traceability code and product information marking on corrugated box.

Typical
Clients

Food Industry



Canned Food

Production Date and QR Code Marking



Bagged Food

Production Date and QR Code Marking



Packed Food

Production Date and QR Code Marking



- FlyingC CO2 Series are applied for production date marking on PE or PET film and best choice for QR code and production date marking on paper box.
- FlyingU UV Series are applied for QR code and production date marking on PE or PET film.

Typical
Clients

Typical Applications

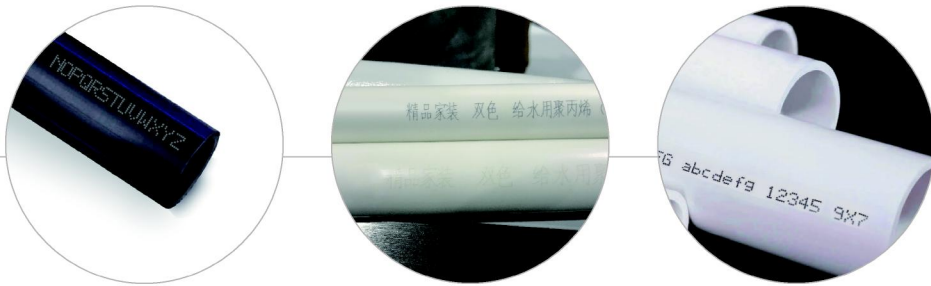


Pipe Industry



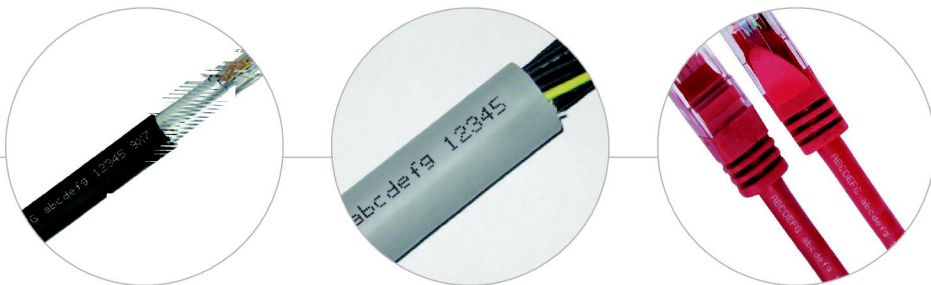
Pipe

Production Date and QR Code Marking



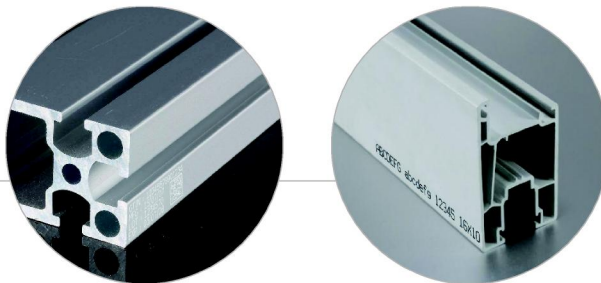
Cable

Production Date and QR Code Marking



Profile

Production Date and QR Code Marking



Daily Chemical Industry

- FlyingU UV Series are applied for production date marking on PE or ABS material
- FlyingF Fiber Series are applied for QR code and production date marking on package
- FlyingC CO2 Series are applied for QR code and production date marking on PE or HDPE material



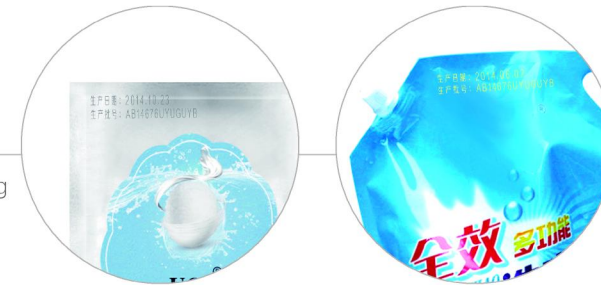
Bottle Package

Production Date and QR Code Marking



Bag

Production Date and QR Code Marking



Carton

Production Date and QR Code Marking



Typical Clients



Typical Clients



Typical Applications



Typical
Clients



SIEMENS

OMRON



TCL

美的 Midea



实德集团 SHIDE GROUP



Qcts Quality Control Tracing system

QCTS-Quality Control Tracing System is a user-configurable, validated, off-the-shelf tool, used to quickly identify issues that impact quality and cost, and to ensure that appropriate follow-up and actions are taken. It' s widely used in consumer products manufacturers, such as liquor, food, beverage, tobacco, medicine, daily chemical, household appliances, clothing, mechanical manufacturing and etc.

